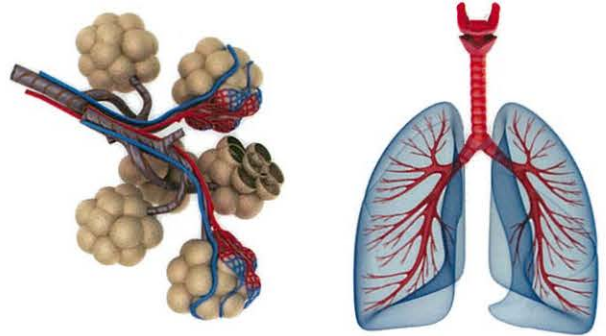


# COPD Outreach

## COPD Outreach is a Hospital at Home based service

Please consider any patients presenting with an exacerbation of COPD for this service as per criteria below:



### INCLUSION CRITERIA

- Diagnosed COPD
  - FEV<sub>1</sub> < 80% predicted
  - FEV<sub>1</sub> / FVC < 70%
- MMSE > 7
- Systolic B/P > 100mmHg
- ABG's Ph > 7.35, PO<sub>2</sub> > 7.3 kPa, PCO<sub>2</sub> < 8 kPa, (on room air unless on oxygen therapy)
- Total WCC 4 – 15 \* 10<sup>9</sup>/l
- 24 – 72 Hrs of presenting to hospital
- Access to telephone
- Adequate social support

### EXCLUSION CRITERIA

- Suspected malignancy
  - Pneumothorax
  - Pneumonia
  - Uncontrolled LVF
  - Acute ECG changes
  - Requires full time care
  - Insufficient home care
  - Requires I.V. therapy
  - Type I Diabetes (uncontrolled BSL >15 mmol)
  - Catchment Area
- Living in Cork City – please d/w COPD Outreach Team**

### EARLY SUPPORTED DISCHARGE

- Discharge: 24-72 hours
- Home visits: Approx. 4



**NURSE: Ciara Daly 086-4182227**

**PHYSIOTHERAPIST: Carmel Casey 086-4182004**